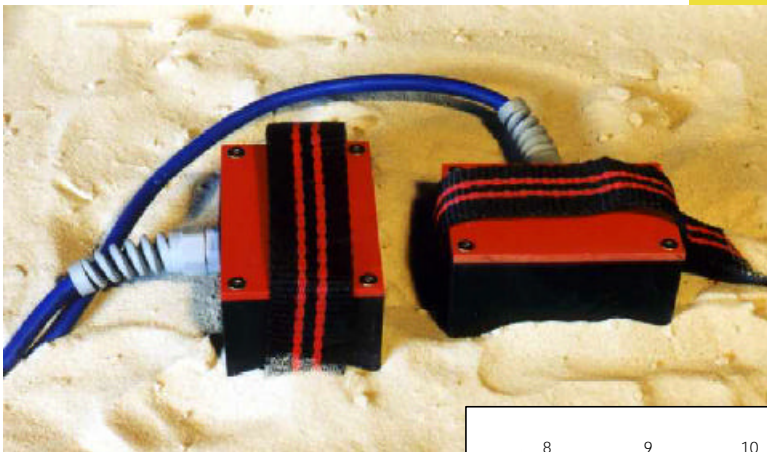


Compensated Surface Shear Wave Geophones

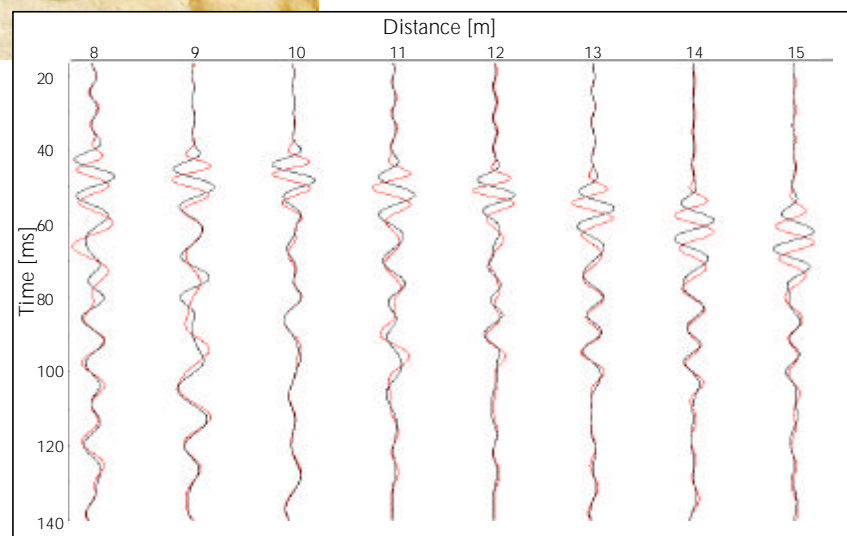
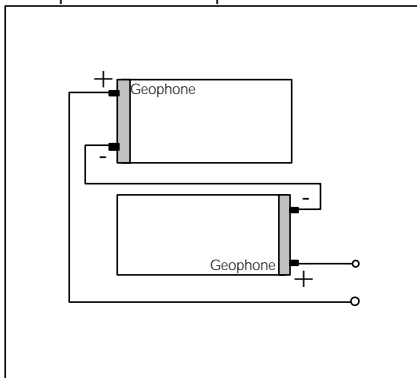
Compensated shear wave receivers are special modified to suppress incoming p-waves while receiving the signal. To a horizontal receiver (H1) an additional geophone element is added, whereas sensitivity of the second geophone element is changed by 180° . Both geophons are electrically connected to each other. It is therefore possible to suppress waves which incident perpendicular to this arrangement (mainly p-waves).



Horizontal Geophone directed as H1 or H2 receiver



Principle for Compensated Geophones



Record with compensated surface shear-wave receivers (shot and reverse shot)

Patented by Edelman and Nolte under German Law (DE 195 28 480 A 1)