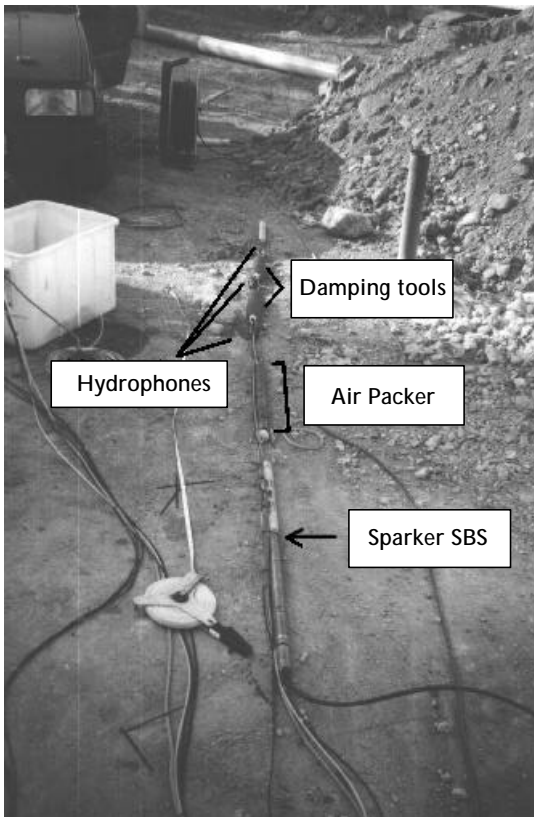


Near Borehole Imaging



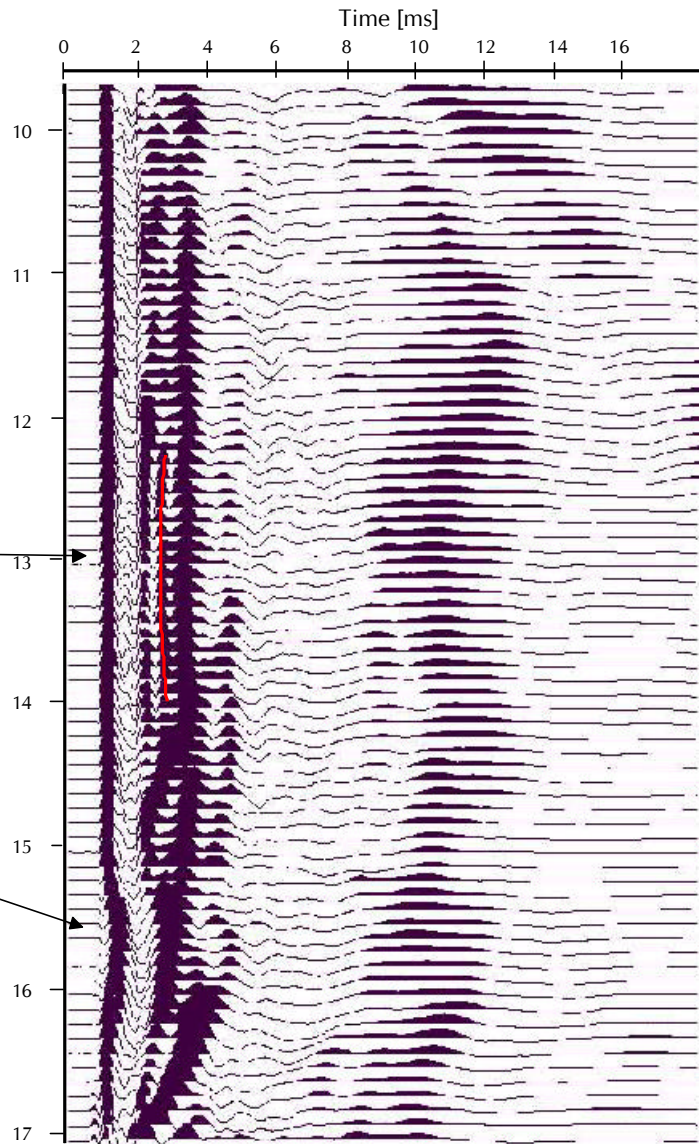
General field setup

Sparker source and hydrophones are used within the same borehole to get reflections from objects near the borehole. Depending on the number of hydrophone channels and source offset deeper penetration can be reached. Damping devices are used to attenuate up- and downgoing borehole waves.

The near borehole range can be imaged by observing direct waves and reflected seismic events.

Near borehole reflection event

Lithology change



Seismic wave field